



BreathCare PAP Device

We care for your every night

yuwell

JIANGSU YUYUE MEDICAL EQUIPMENT & SUPPLY CO., LTD

Sales Center Address: Huanyuan East Road No.1, Xuzhuang Software Park, Nanjing, Jiangsu Province, P.R. China

Tel: 86-25-8713 6530 Fax: 86-25-8713 6530

Manufacturing Address: YunYang Industrial Park, DanYang, Jiangsu Province, P.R. China

Tel: 86-511-8690 0869 86-511-8690 0859 Fax: 86-511-8690 0860

E-mail: yuwellsales@yuyue.com.cn

www.yuwell.com



2015, Yuyue medical, all rights reserved. The "yuwell" logo and name are trademarked by Jiangsu Yuyue Medical Equipment & Supply Co., Ltd. and may not be distributed, modified, reproduced in whole or in part without the prior. All specifications and product configurations are subject to change without notification.

yuwell
You, We Love Life

BreathCare PAP Device

We care for your every night

Do you snore? What cause snore?

What is **OSAHS**

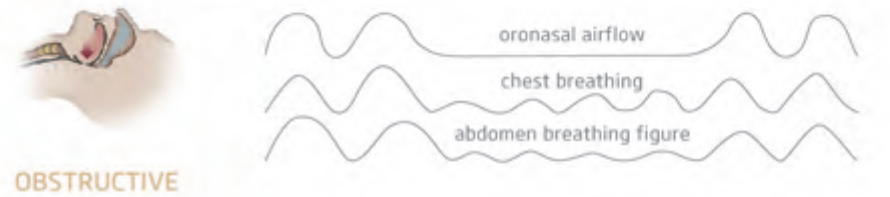
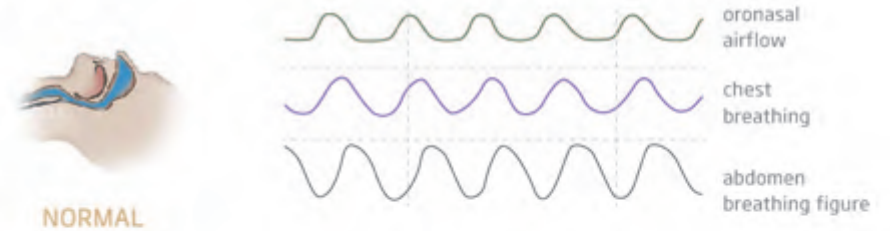
OSAHS(obstructive sleep apnea-hypopnea syndrome): disease characterized by repetitive collapse of upper airway during sleep.

Symptom: Apneas and Hypopneas, Sleep structure disorder and snore, frequent occurrence of oxygen desaturation, daytime sleepiness and etc.

Definition of apnoea: There' s no nasal airflow when apnea, while the abdominal movement still.



The normal and obstructive oronasal airflow, chest breathing and abdomen breathing.



The severity of OSAHS from AHI(apnea-hypopnea index) and SaO2

Degree	AHI(times/h)	SaO2(%)
Mildly	5-15	85-90
Moderate	>15-30	80- <85
Serious	>30	<80

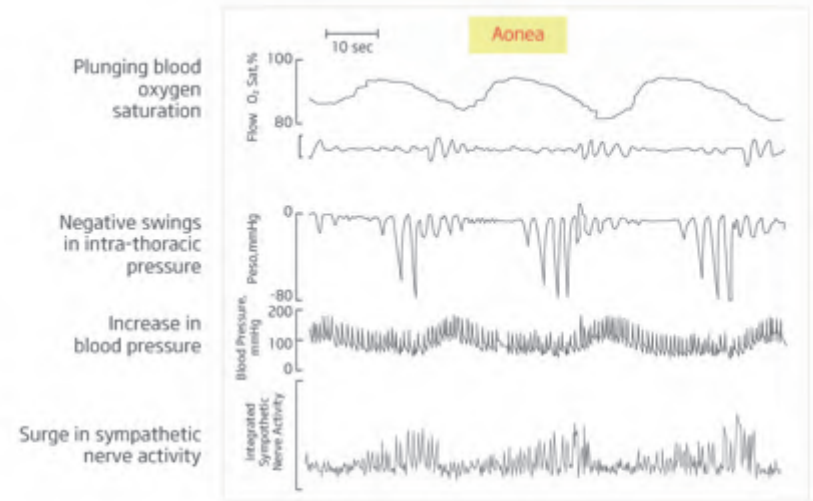
Prevalence of OSA

	Male	Female
AHI > 5	24%	9%
AHI > 15	9%	4%

Symptom of OSAHS



Physiological symptoms of Sleep Apnea
(Morgan et al., Sleep 1996)



Who gets OSA?

Obesity

- Obesity is a significant risk factor for OSA
- 60 - 70% of OSA patients are obese
- 77% of morbidly obese adults have OSA - (BMI > 35)



Stroke

- 65% patients who suffer a stroke have SDB (sleeping disordered breathing)
- Up to 70% of patients in rehabilitation therapy following stroke have significant SDB (AHI > 10)
- SDB in stroke patients associated with increased mortality



Coronary Artery Disease (CAD)

- 30 % of CAD patients have SDB (Schafer et al, Cardiology 1999)
- OSA treatment associated with decrease in occurrence of new cardiovascular events and increase time to events



Hypertension

- Approximately 80% people with drug-resistant hypertension have SDB
- SDB produces prolonged cardiovascular stress, leading to increased BP, both day and night
- Likelihood of developing new hypertension over 4 years
 - a) AHI 5-15 2-fold greater
 - b) AHI > 15 3-fold greater
 - c) Effective SDB treatment decreased BP during sleep and wakefulness - 10mmHg



Type 2 Diabetes

- Up to 60% people with Type 2 Diabetes suffer SDB.
- SDB may have a causal role in the development of diabetes.
- Associated with insulin resistance (independent of obesity) .
- 30% patients presenting to sleep clinics have impaired glucose tolerance or diabetes, of which 40% undiagnosed.



Cardiac Arrhythmia

- Cardiac arrhythmias 50-75%
 - Bradycardia (slow heart rate)
 - Ventricular arrhythmias
 - Sinus pause
- OSA 50% of all Atrial Fibrillation (AF) patients
- AF patients on effective CPAP treatment have lower risk of AF recurrence than those with untreated OSA



Congestive Heart Failure (CHF)

- 50% people with CHF have SDB
- Common in moderate to severe heart failure patients - increased mortality
- Effective SDB treatment leads to
 - Improved Left Ventricular Function
 - Improved quality of life
 - Increased survival



Therapy



1. Conventional therapy
 Improve living habits: To lose weight, lateral sleep, stop smoking and drinking, take sedative hypnotic drugs

2. Oral correction
 To correct the organ structure with appliance. Muscle soreness and only can cure mildly OSAHS.

3. Surgical treatment
 Research shows that 62% patients got permanent side-effects such as difficulty swallowing, voice, smell and taste change.

4. PAP device
 Strongly recommended by ACP(American College of Physicians) CPAP-The first choice for SAHS patients, it's the most reliable, safety and effective treatment.

Comparison		
	Advantages	Disadvantages
Common therapy	Low cost, easy operation	Slow effect, hard to control
Oral appliance	No trauma, low cost	Small application scope, hard to insist
Surgical treatment	Effective, quick results	High cost & risk, easy to relapse
✓ PAP device	No trauma, safe and comfort, improve sleep quality immediately	User-friendly with little discomfort

Principle of PAP device

PAP(Positive Airway Pressure) device works as an air compressor, it constantly blows pressurized air to patient's airway, to prevent airway collapse.

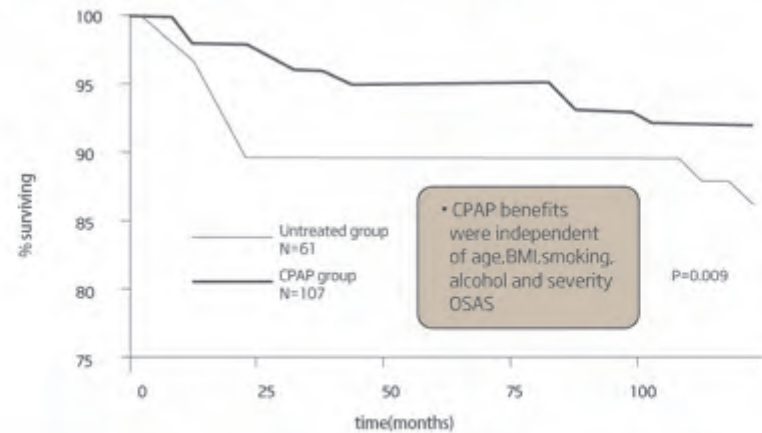
The PAP devices contain CPAP, Auto CPAP and BiPAP.

CPAP: Continuous Positive Airway Pressure device

Auto CPAP: Automatic Continuous Positive Airway Pressure device

BiPAP: Bi level Positive Airway Pressure device

Survival for cardiovascular death in CPAP VS untreated patients



SBQ The STOP-Bang score for identifying OSA

1. Do you get a habitual snoring?	yes <input type="checkbox"/>	no <input type="checkbox"/>
2. Do you always feel fatigue, sleepiness or lethargy?	yes <input type="checkbox"/>	no <input type="checkbox"/>
3. Do you have apnea when sleep?	yes <input type="checkbox"/>	no <input type="checkbox"/>
4. Have you ever had hypertension or are you a hypertension patient?	yes <input type="checkbox"/>	no <input type="checkbox"/>
5. Is your BMI higher than 35?	yes <input type="checkbox"/>	no <input type="checkbox"/>
6. Are you more than 50 years old?	yes <input type="checkbox"/>	no <input type="checkbox"/>
7. Is your neck circumference more than 40cm?	yes <input type="checkbox"/>	no <input type="checkbox"/>
8. Are you a male?	yes <input type="checkbox"/>	no <input type="checkbox"/>

Evaluation

If you got 3 or more than 3 yes, it means you have a high risk of OSA. Or if your yes is less than 3, it means you have a low risk.

BreathCare PAP Device CPAP / APAP

We care for your every night

Stable

Comfort

Quiet



YH-580 Black/silver



YH-580 Black/wodden

Quiet 4 methods for reducing noise level Noise $\leq 28\text{dB}$

1. Quiet high efficiency brushless DC motor

With ultra quiet, fast switching between pressure increasing and decreasing.

2. USM airway system

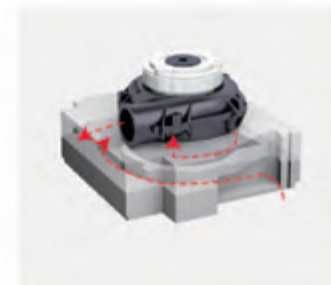
The frequency of the airflow in duct and the motor frequency are adjusted to the frequency band where they can be most effectively eliminated by sound-absorbing cotton, to achieve the Ultra silent muffling effect.

3. PCM technology

The humidifier adopts the Phase cancel muffling (PCM) technology. The effect is achieved by airflow hedge, thus realizing the muffling while humidifying. Yuwell originally designed One-day line humidifier reminds users to change the water in the humidifier tank everyday to ensure its cleaning.

4. 3A audio self-adaptive technology

The 3A (Adaptive Audio Adjustment) air inlet adaptively adjust the inlet air noise frequency produced under different conditions, so as to improve the sound quality and realize the comfortable user experience.



Stable

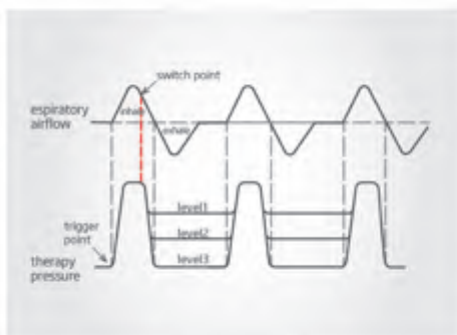
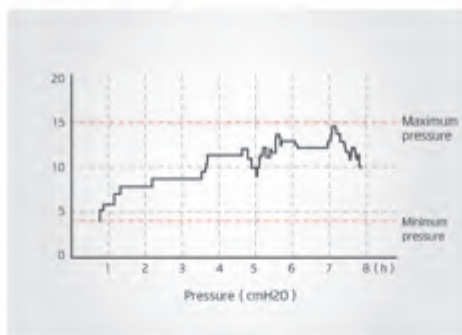
Imported Responsive Motor

200MS of rapid response

20000hours of long life

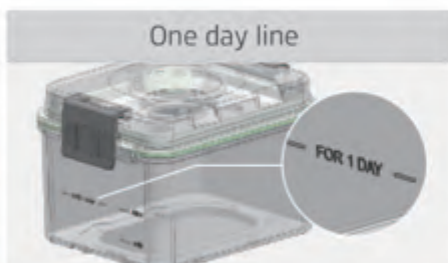


Comfort



AM-Auto algorithm of yuwell BreathCare PAP device is established with years' of clinical data. It effectively reduces the average treatment pressure, and provides a comfortable therapy experience for users. Stable, is the most important parameter of PAP devices.

FPS-Tech is the unique software algorithm for yuwell BreathCare PAP device. With exact capturing the breathing rhythm of user through respiratory frequency, it can control the motor accurately to timely accelerate and decelerate and ensure the comfortable therapy.



Option

Connection with oxygen concentrator

To supply oxygen with mask which can help ease symptoms of hypercapnia.



Connection with fingertip oximeter

To monitor the SpO2 of patients in real time when using PAP device.



CPAP

(White-wooden/white-silver)
 Treatment mode: CPAP
 Pressure range: 4-20 cmH2O
 Pressure accuracy: ± 0.5 cmH2O
 Time-lapse boosting: 0-45min
 Alarm protection: face mask fell alarm
 Power: 100-240V, 50-60Hz DC 24V
 Automatic altimetric compensation: 3500m
 Automatic altimetric compensation
 USM air circuit system: ultra silence air circuit system
 PCM: noise removal technology
 3A self adapting frequency adjusting technique



AUTO-CPAP

(Black-wooden/ black-silver)
 Treatment mode: CPAP, APAP
 Pressure range: 4-20 cmH2O
 Pressure accuracy: ± 0.5 cmH2O
 Time-lapse boosting: 0-45min
 Alarm protection: face mask fell alarm
 Power: 100-240V, 50-60Hz DC 24V
 Automatic altimetric compensation: 3500m
 Automatic altimetric compensation
 USM air circuit system: ultra silence air circuit system
 PCM: noise removal technology
 3A self adapting frequency adjusting technique
 Intelligent Multi pressurization technique

Platform of group

6 cities with 7 platforms



SUZHOU YUYUE MEDICAL TECHNOLOGY CO., LTD.
The medical disposable products R&D center



Production workshop

Laboratory

Office



Shanghai

- Medical surgical instruments & orthopedics center
- Financial centre

Danyang

- Electricmedical equipment manufacturing center

Nanjing

- Sales center and electricmedical equipment R & D center

Beijing

- Medical imaging equipment center
- Hospital equipment center